

Find the Mommy

Match the mommy with their child. Use the pictures to help.

Find the Mommy For:



D 1. Jesus



Mommies

A. Elizabeth



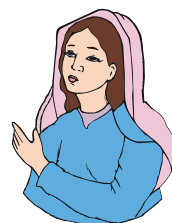
E 2. Joseph



B. Rebekah



B 3. Jacob



C. Hagar



F 4. Abel



D. Mary



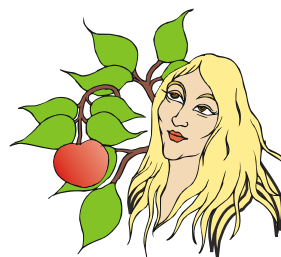
A 5. John the Baptist



E. Rachel



G 6. Isaac



F. Eve



C 7. Ishmael



G. Sarah